



*Merry
&
Bright*

Livonia's Holiday Parade and Tree Lighting

Welcome!

Thank you for signing up to participate in Livonia's Merry & Bright Holiday Parade on Sunday December 8, 2019. We are looking forward to another great event this year. The parade is scheduled to begin at 4:00 p.m. and should last just over an hour. Staging will begin at 2:40 p.m. and your group will receive its specific staging time about a week before the parade. We also invite your group to join us at the annual Tree Lighting Ceremony which takes place at City Hall immediately following the conclusion of the parade.

Parade Route

The parade route is approximately 1.2 miles on foot, and another .6 miles to the designated pickup area. The staging takes place at Frost Middle School which is located at 14041 Stark Rd. The pickup area is located at the Kirksey Recreation Center at 15100 Hubbard. The parade route is as follows:

1. Begin at Frost Middle School (14041 Stark Rd)
2. Proceed north on Stark Rd to Lyndon
3. Proceed east on Lyndon to Farmington Rd
4. Proceed north on Farmington Rd to Civic Center Dr.
5. Proceed east on Civic Center Dr. towards City Hall
6. End of parade just outside of City Hall (33000 Civic Center Dr.)
7. Proceed along Civic Center Dr. and then turn east on sidewalk along Five Mile
8. Proceed to Kirksey Recreation Center (volunteers will assist) to pickup area

Staging

The parade lineup will be officially established about a week before the parade. Your group's specific staging time will be dependent on your place in the parade. Parade participants are asked to be dropped off at Frost Middle School which is located at 14041 Stark Rd. **Frost Middle School is a drop-off area ONLY.** Please note that all parade participants must be at Frost Middle School no later than 3:40 p.m. or they will not be included in the parade. The Holiday Parade will begin at 4:00 p.m. and is on a very strict schedule due to all of the road closures. Please enter Frost Middle School from the north driveway (see attached map) and follow instructions from the volunteers. Volunteers will be available to escort participants to their exact staging location.

Parking/Pick-Up Area

There will be **NO PARKING** available at Frost Middle School. We strongly encourage groups to carpool and plan accordingly. We suggest that groups coordinate with family and friends to be dropped off at Frost Middle School and then picked up at the Kirksey Recreation Center after the parade. Parking is located at Ford Field, the Senior Center, the Civic Center Library, 16th District Court, and the Kirksey Recreation Center.

If you are picking up a participant and plan to stay for the Tree Lighting Ceremony...

We suggest dropping off your participant and then parking at either the Civic Park Senior Center, the Civic Center Library, or the 16th District Court. We encourage carpooling and arriving early as spaces are limited and have filled up quickly in the past. You can meet your participant at the end of the parade route and then proceed to the Tree Lighting Ceremony.

If you are picking up a participant and do not plan to stay for the Tree Lighting Ceremony...

We suggest dropping off your participant, parking at the Kirksey Recreation Center or at Bentley Field, and then walking to the end of the parade route outside of City Hall. (approximately .6 mile walk) where you can meet your participant at the end of the parade, and then proceed to your vehicle once you are done watching the parade.

Otherwise, coordinate with a family member or friend who can save a parking spot at either the Civic Park Senior Center, the Civic Center Library, or the 16th District Court. Once the parade has concluded, you can proceed to your other vehicle.

Expectations

We are looking for your group to represent themselves in a festive way! Wear festive clothing, make a banner, build a float, decorate a vehicle, and anything else you can think of/are able to do. Just be creative! And please, do not include Santa Claus in your group (we already have one who will bring up the rear of the parade). You are welcome to pass out candy but please be extra careful if throwing candy. **Promotional flyers and advertisements are prohibited.** Please dress for the weather!

Vehicles

We are very excited to include floats and vehicles in the parade. That being said, we expect all drivers to be very cautious while operating their vehicles and floats. All drivers are required to idle their vehicles. We want the parade to stay together, and the groups that are walking are unable to keep up if vehicles proceed too quickly. Try to keep 10-15 yards between the group in front of and behind you. When in doubt, slower is better for vehicles in the parade!

Contact Information

For any questions, concerns, or special requests, please contact:

Billy Keppen – Livonia Parks and Recreation

E-mail: wkeppen@ci.livonia.mi.us

Phone: (734) 466-2415

Merry & Bright: Livonia's Holiday Parade and Tree Lighting

- Staging takes place at Frost Middle School at 2:45 p.m.
- The parade begins at 4:00 p.m.
- The parade will proceed north on Stark, east on Lyndon, north on Farmington, and east on Civic Center Dr before ending just outside of City Hall
- The parade is expected to last roughly an hour and will be followed by the Tree Lighting Ceremony

Public Parking

Library

City Hall

Volunteers will be placed along blue route to help guide participants to the pickup location

Those who do not plan on staying for the Tree Lighting Ceremony should drop off their participant at Frost Middle School and then park at the Kirksey Recreation Center or Bentley Field. Once parked, walk to City Hall to watch the parade and escort your participant back to your vehicle afterwards.

Participants who plan to stay for the Tree Lighting should move into the parking lot or grass outside of City Hall once completing the parade. Those who do not plan to stay should proceed along the blue path to the designated pick-up zone.

The following roads/intersections will be closed:

- Stark and Schoolcraft
- Farmington and Schoolcraft
- Lyndon just east of Farmington
- Farmington and Five Mile
- Civic Center Dr

Drop-Off Area ONLY

Frost Middle School (Staging Area)



Volunteers will be on-site to help escort participants to their designated location. This is a drop-off area ONLY.

Please make sure to know your group name and group leader as we have many groups with similar names.

Staging Area

North Staging Area

3:00 p.m. - 3:30 p.m. staging times

Frost Middle School will have one-way traffic only to accommodate participants being dropped off at the staging area. Please enter from the north drive and exit at the drive to the south. Please note that there is **NO PARKING** available at the staging area.

South Staging Area

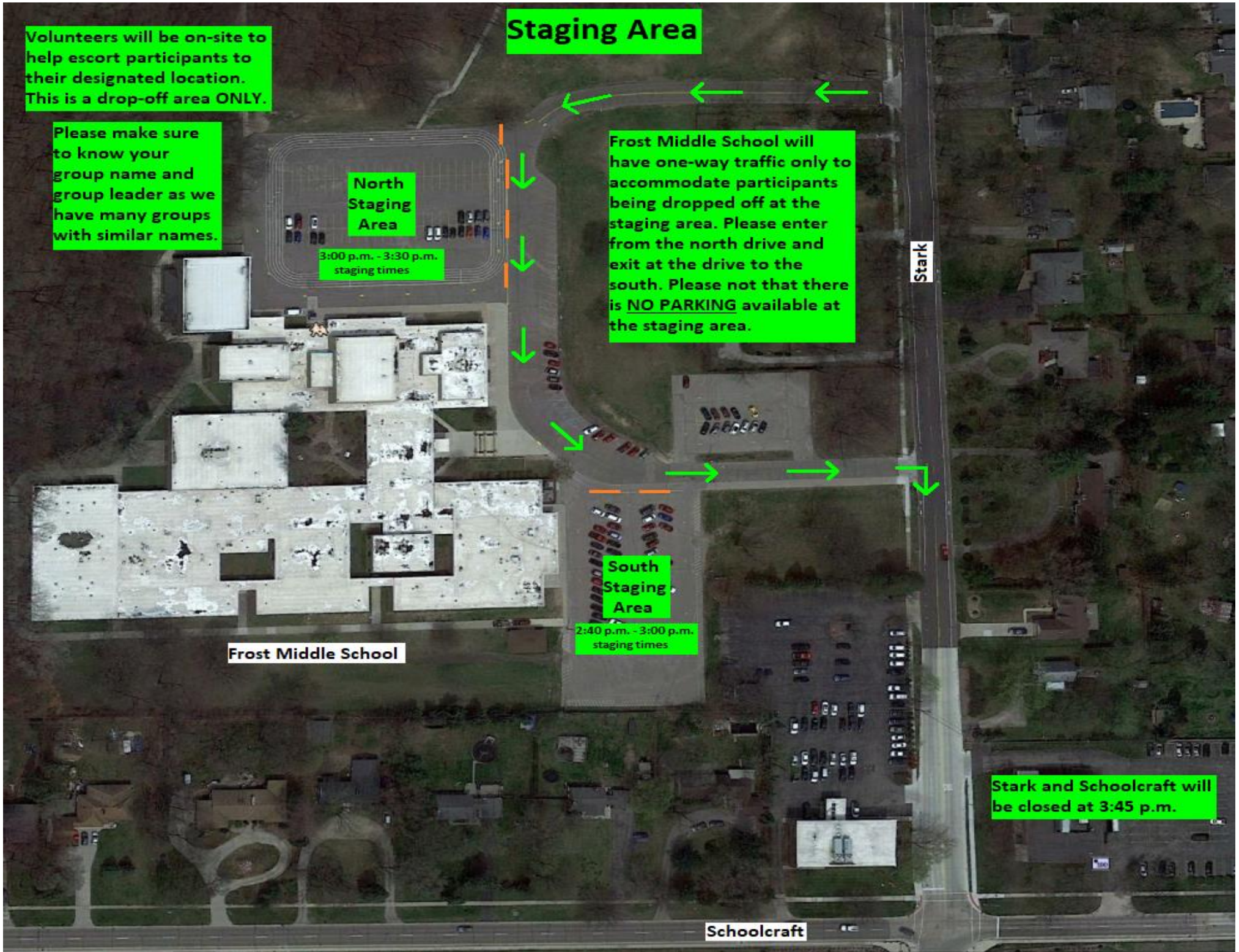
2:40 p.m. - 3:00 p.m. staging times

Frost Middle School

Stark

Stark and Schoolcraft will be closed at 3:45 p.m.

Schoolcraft



End of Parade/Pick-Up Area



Loveland

Police Officer
CERT CERT

5-Mile Rd

Civic Center Library

16th District Court

CERT

CERT

P&R STAFF

P&R STAFF

Parade participants must keep moving towards the Kirksey Recreation Center unless they are staying for the Tree Lighting Ceremony. If they are staying, they need to move off of Civic Center Dr. towards City Hall in a prompt manner to allow the parade to continue to flow.

The 16th District Court parking lot will be closed when full and then not re-opened until the parade has completed.

Participants must cross the street at the designated crosswalk.

Bentley Field Designated Pick-Up Area

Kirksey Recreation Center Designated Pick-Up Area

Police Officer

Brookfield-St

Fairfield-St

Hubbard-St

Jami

ling